

# NECKLACE SIZE GUIDE



1



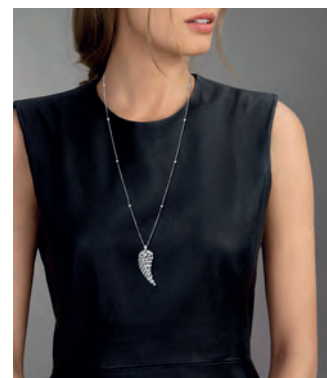
2



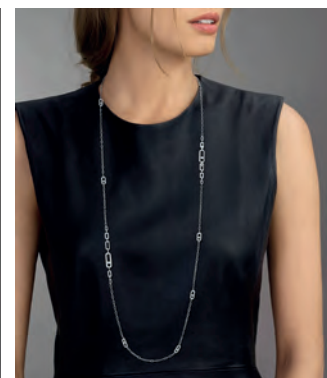
3



4



5



6

## *How to measure your neck size?*

To measure your neck size, take use a tape measure or piece of string and wrap it around your neck (not too tight), just above your collarbone.

	SURNAME	MEASUREMENTS	STYLE
1	Crew necklace	30-33cm	Worn around the base of the neck. Very popular right now, this diamond necklace can be worn with any type of clothing, enhancing your neckline in any style.
2	Choker	35-41cm	Slightly longer, this design wraps elegantly around the next and can be worn with one or several other necklaces for a stacking effect. It can be worn for a chic-casual look or for a fully laid-back style.
3	Princess	42-48cm	The most popular and common style of necklace. This diamond necklace sits just below the collarbone. Perfect for everyday wear, and easy to adapt to any style.
4	Matinee	51-61cm	Usually worn on the upper bust. Ultra-chic and modern, this diamond necklace is an absolute must-have item that brings a touch of elegance to any outfit.
5	Opera	71-86cm	This long diamond necklace can accompany a chic, festive outfit or a more formal look.
6	Long sautoir	90cm et +	An iconic symbol of the 1920's look, this diamond necklace can be worn at full-length or wrapped several times around the neck for a cascading effect.